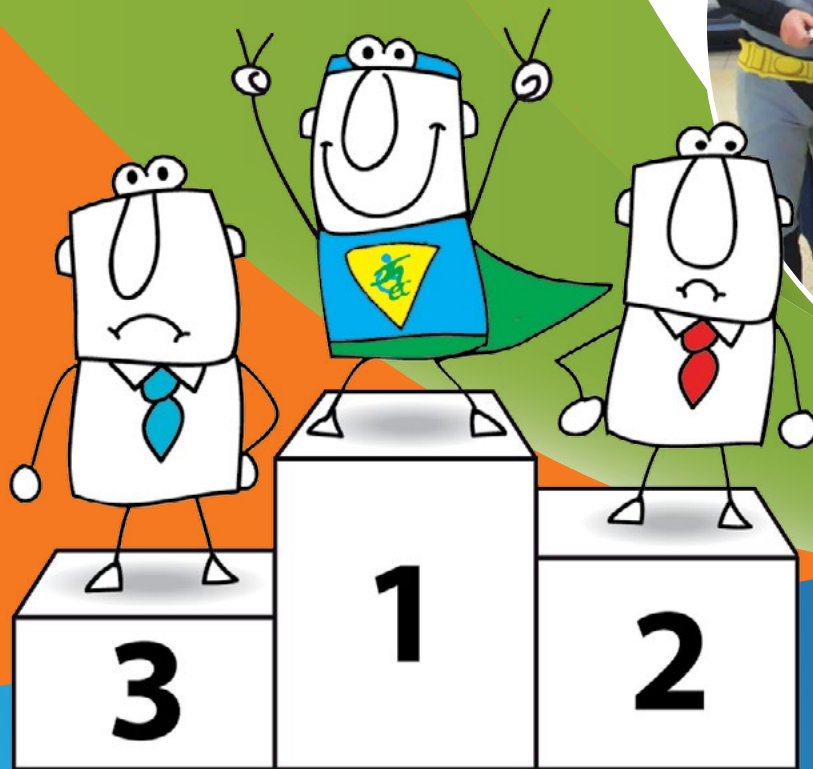


Enterprise Club For Disabled People

Improving the quality of life of disabled people in Coventry since 1938





We can ALL be Heroes - it's whether you choose to be one, **YOU have the power ...**
(no costume necessary!)

Definition: hero - noun 1. a person, who is admired for their courage, outstanding achievements, or noble qualities.



It is with great pride and purpose that I write in celebration of the club's 80th anniversary. Pride because I am honoured to be part of an organisation that cares so much about disabled people in Coventry and because after 80 years the club continues to be a shining example of the care and dedication so willingly provided by the 50 or more volunteers who selflessly give up their time to attend the club to provide support to those with disabilities.

The main aim of the charity's work is to reduce the feeling of loneliness and isolation often experienced by disabled people and to offer opportunities to socialise and make friends. Mini buses are provided to enable people to gain access to these opportunities. Without the Club, it would leave members with a huge social void in their lives. Without funding, the club would not exist and that would be a travesty.

The Enterprise Club currently must raise more than £100,000 per year just to cover running costs for the premises and to keep our three adapted minibuses up to date and cover other transport costs. We need to look to the future of the club and encourage donations and bequests to ensure that we can continue to provide a service to the disabled people of Coventry and the surrounding areas. Further information is available from our website, enterprisecub.org where you will also be able to make a donation through JustGiving.

I should be delighted if you would consider joining our band of Heroes.

Clive Benfield - President of The Enterprise Club For Disabled People



ERIC GRAY OUR FIRST HERO

The idea started in 1937 with a man called Eric Gray. He was severely disabled and walked with crutches. He noticed there was a lack of social clubs and activities for himself and others like him so he wrote a letter to the Midland Daily Telegraph (now the Coventry Telegraph):

“Sir – As a cripple myself, and being in touch with a number of others similarly placed, a suggestion has been made that a club for crippled boys be formed. The idea is to provide a place for social activity for such boys who, by reason of their physical disadvantages, cannot mix freely with other boys in such clubs as are at present open in the city. I should be grateful, therefore, if you would be good enough to permit me the space of this letter in your columns in the hope that it may be the means of bringing together those who might be interested in the idea. Will anyone who might be disposed towards helping launch such a scheme please write to me at...(inserts his address here)”

This was printed and soon enough he was contacted by two other disabled men. These were Harry Truslove and Len Tasker. After much hard work and help from other parties they formed “The Coventry Cripples Social Club” in 1938. Their main aims were to provide social, cultural and educational activities for the disabled citizens of Coventry.

However, in 1939 the Second World War started and meetings were less regular and the threat of bombing was ever present. Nevertheless, the meetings continued even though some members did die in bombings and some equipment was destroyed.

After a while they managed to acquire a damaged building belonging to Mr. Gray. They purchased equipment and repaired the building and at this time had more than 40 members attending. Thus, the first club dedicated to the social welfare of disabled people in Coventry was formed.





Our members & volunteers raising money at the Coventry WALKATHON - 2016

THE PRESENT ENTERPRISE CLUB

The club wanted to find freehold premises that they could call their own and were introduced to a man called Mr. Herbert Haddock who owned 16 Avon Street (the current address of the club). He was selling his house and half-acre of land because he was moving into a residential home due to his worsening disability. After hearing the clubs need he offered his property for a nominal price and the club eagerly accepted. A substantial bequest left by a late member helped with the purchase.

The Enterprise Club moved into 16 Avon Street in the early 1960's and in 1964 gained planning permission to extend at the rear of the house.

The extension was built in 1965 for £15,000 and was opened in 1966. Your support is vital to the continued existence of The Enterprise Club, your donation will make a difference.

Thank you to everyone for your support from us all at The Enterprise Club.

TOGETHER WE CAN MAKE A DIFFERENCE

Heroes: Enable, Enrich, Enhance.

The majority of the activities undertaken depend on support from volunteer Heroes to enable the club to carry them out successfully.

Our members receive support as required and can be confident that the activities they enjoy and get great benefit from will run efficiently and effectively.

Transport Heroes enable our members to attend weekly activities at the club, enjoy lunch and theatre excursions, participate in sports events all over the country and visit places of interest in the wider community.

Befriending Heroes enrich our members' experiences at the club by chatting, offering friendship and assisting with activities and equipment.

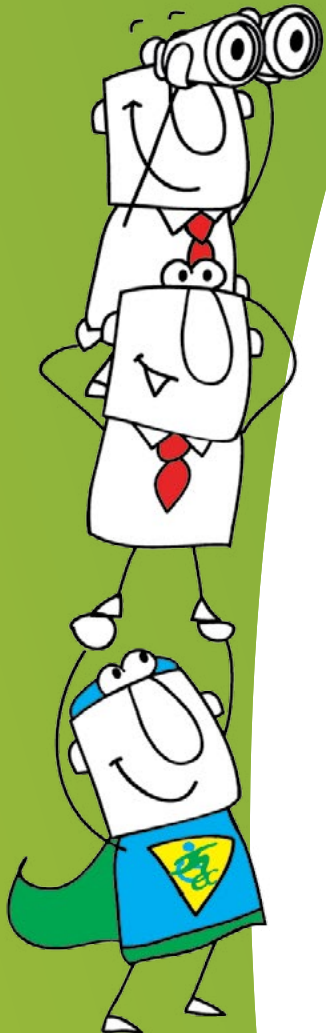
Catering Heroes enhance our members' participation in the weekly activities by serving refreshments and operating the Coffee Bar.

Fundraising Heroes enthusiastically lend support for our many fundraising events: Charity Bag Packs, Charity Collections, Walkathon, Christmas Bazaar, 70 Club, Raffles etc.

Funding Heroes offer opportunities to carry out fund raising events, award grants and donations, or adopt the club as their chosen charity for a year. The club receives no statutory funding and needs to raise £100,000 per annum to keep the premises, accessible vehicles and activities operating.

The club is very proactive and organises a year-long fund raising programme, which is well supported by the members.

However external support is vital, as the internal fund raising ventures alone would not bring in the necessary income.





The charity receives wonderful support from the major supermarket chains with stores in the local area: Sainsbury's, One Stop, Tesco, Asda, Morrison's and Iceland. In the recent past a number of local organisations have chosen to adopt the club as their Charity of the Year. Annual donations are received from a number of charitable trusts and local charities. Our members are able to achieve with the support of volunteers.

During 2017 our team of sports men and women attended three external sporting events at Rugby, Solihull and Swindon, winning 179 medals and trophies and five Endeavour Awards. Our members were supported by volunteer mini bus drivers and general volunteers who provided one-to-one assistance as necessary with the sporting events.

Twenty eight members and volunteers took part in the Coventry Walkathon, organised by Leofric Lions, raising £1,655 in sponsorship for the club.

During the year we carry out approximately 20 Charity Bag Packs and Charity Collections which bring in a substantial income. Volunteers donate their time to work alongside our members and drive the mini buses.



BEING ^{dis}ABLEd WHAT THE CLUB MEANS TO US...



Without our valued Heroes we would not be able to enjoy our wonderful Club, meet friends old and new, partake in sports days, enjoy social evenings, excursions and much, much more.

Our Club is open four days and evenings every week.

To our Heroes:

Thank you so much from us all for your generosity, we couldn't do what we do without your support.

From the bottom of our hearts, THANK-YOU for your support and love towards our Club!



Q: When did you become a member of the Enterprise Club?
A: 12th July 1990

Q: Why did you go?
A: An existing member introduced me. It was somewhere for me to go in the evening to socialise.

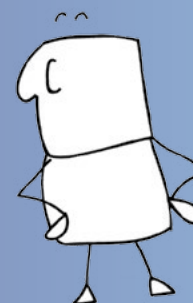
Q: How many times do you go?
A: I go to the Tuesday evening social & the Sports Group on a Wednesday and Saturday evening. I play in one of the club's Short Mat Bowls League

teams and take part in the external sports events. I help with quite a few fundraising events including the Charity Bag Packs and Charity Collections. I also took part in the Coventry Walkathon.

Q: Have you made new friends?
A: I have lots of friends in all of the groups that I attend.

Q: What do you like about the club?
A: I have made long lasting friends at all of the groups I attend. I've learnt to play Short Mat Bowls and play for one of the club's league teams. I have become a successful bowler winning a number of awards over the years.

Q: What does the club mean to you?
A: I got involved in sporting activities and learnt to bowl. I have some where to go regularly to meet up with friends.





Q: When did you become a member of the Enterprise Club?

A: 9th January 1991

Q: Why did you go?

A: It gave me the chance to get out and socialise.

Q: How many times do you go?

A: I go to the Handicraft Group, the Sports Group on a Wednesday and Saturday evening and occasionally the social evening on a Tuesday.

I help with a lot of the fundraising

events: including the Charity Bag Packs and Charity Collections. I help to sell the diaries and the Christmas Draw tickets every year. I also raised money for the club by taking part in the Coventry Walkathon.

Q: Have you made new friends?

A: I have made lots of friends over the years.

Q: What do you like about the club?

A: There is a friendly atmosphere, lots going on and people to talk to.

Q: What does the club mean to you?

A: The club is a big part of my life. I don't feel lonely when I am there.



Q: When did you become a member of the Enterprise Club?

A: 10th March 1983

Q: Why did you go?

A: When I joined I worked during the day and it gave me somewhere different to go in the evenings.

Q: How many times do you go?

A: I attend the Tuesday Social evening and the Sports Group on Wednesday and Saturday

evenings. I have been a member of the Management Committee for over 20 years. I help with most of the yearly fundraising events, particularly the Charity Bag Packs, Charity Collections and the annual Christmas Bazaar. I take responsibility for the raffles at all of our special events. For many years I have organised the entertainment on a Tuesday evening.

Q: Have you made new friends?

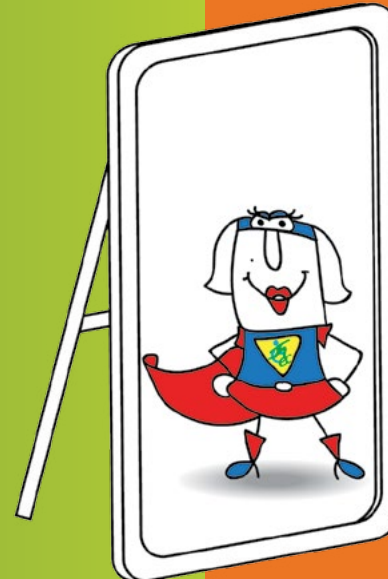
A: I have made some special, life- long friends since I joined the club 35 years ago.

Q: What do you like about the club?

A: Friendly, busy, always lots going on.

Q: What does the club mean to you?

A: I have always had really good support from the friends I have made. In recent times they have supported me well through several illnesses.



HELP US BY BECOMING ONE OF OUR HEROES!

You do not have to have extraordinary or super human powers or be exceptionally skilful or successful. You just need to be prepared to use the strengths and skills that you have to do good things and offer to help someone else.

Heroes can be individuals donating their time to provide support or companies, charitable trusts, businesses, organisations offering grants, donations or fundraising opportunities.

Become a Real life Hero and:

Donate a few hours of your time to become a Volunteer Hero and offer practical assistance which can make a tremendous difference to our members' lives. All of our activities depend on assistance from volunteers to help with catering, activities, general befriending and mini bus driving.

A warm welcome, basic training and support is offered to all volunteers.

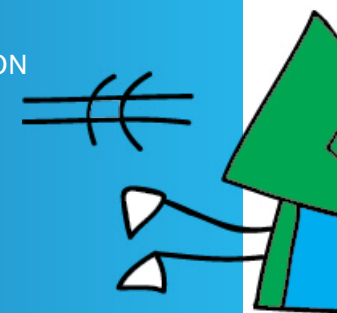
Or:

Become a Funding Hero and make a donation, offer a fundraising opportunity, award a grant or adopt the club as your chosen charity for a specified period.

For further information just contact us through enterpriseclub.org, Facebook or telephone (024)76451066.

THANK YOU TO OUR CURRENT HEROES

THE 29TH MAY 1961 CHARITABLE TRUST
THE GENERAL CHARITIES OF THE CITY OF COVENTRY
CITY OF COVENTRY FREEMEN'S GUILD
COVENTRY & DISTRICT CRICKET LEAGUE
COVENTRY LEOFRIC LIONS
THE DEPARTMENT FOR TRANSPORT
ARLINGTON AUTOMOTIVE
THE NOSTALGICS CONCERT PARTY
WYKEN MALE VOICE CHOIR
ONE STOP SUPERMARKETS
HEART OF ENGLAND COMMUNITY FOUNDATION
THE UKUHOLOGICS
ASDA
MORRISON'S
TESCO
ICELAND
SAINSBURY'S
HEART OF ENGLAND CO-OPERATIVE SOCIETY
BENFIELD HOMES
COMMUNITY TRANSPORT ASSOCIATION
NORTH STREET GARAGE
THE LUXURY BAKERY
THE COLEMAN FAMILY
MR D. DUNBAR
Bequests received from:
MR HARRY WESTON M.B.E
MR.K.B. BENFIELD
MR. H. BORLEY
MR F. MILLER



HOW TO BE A **HERO** IN REAL LIFE...



MAKE A DONATION

By setting up a Direct Debit you can choose how much and how often you donate. Alternatively you can make a one-off donation using a debit or credit card. It's quick, easy and secure. You can send in your donation to us by post in the form of a cheque.



FUNDRAISING

The charity has never received any statutory funding. There are lots of ways you can fundraise too: from bake sales to sponsored silences and bucket collections. Or why not come along to one of our fun events and support us. Events are on our website.



VOLUNTEER

Volunteers are a vital ingredient in the day-to-day running of the services offered to our members. We need help from the catering of light refreshments through to volunteers to drive our mini bus. Most roles just need your time and enthusiasm.



LEAVE A LEGACY IN YOUR WILL

Gifts in Wills ensure our unique and vital support can continue for many years to come. Create a legacy of opportunity and hope for future generations across the UK. Please help us to help tomorrow's disabled people who we have yet to meet.

DONATE NOW it's easy!

www.justgiving.com/enterpriseclub.com
or scan the QR code below with your smartphone
to go straight to our online donation page





GO ON BE A HERO!

The Enterprise Club for Disabled People
Enterprise House
16 Avon Street
Coventry
CV2 3GL

024 7645 1066
www.enterpriseclub.org
enterprise_club@hotmail.com

Registered charity no 230264

